



# NORTH STONEHAM PARK



THREE BEDROOMS

## The Holland

A stylish and spacious three-bedroom townhouse

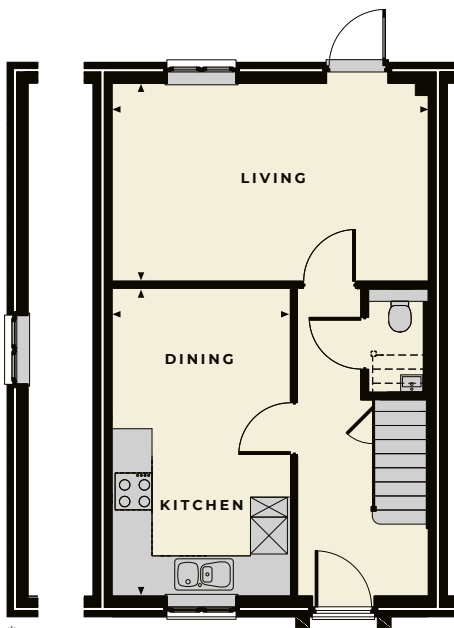
THREE BEDROOMS

# The Holland

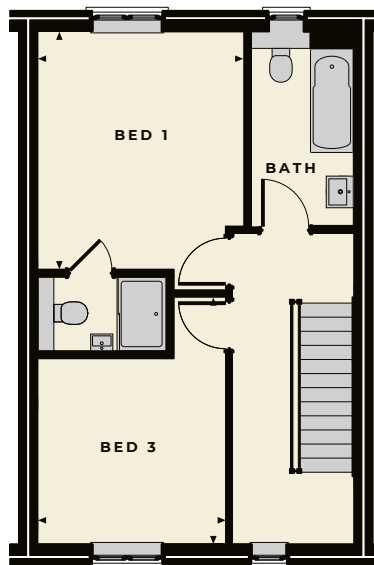


The Holland is a beautiful, three-bedroom townhouse featuring generously proportioned rooms and built in a modern style over three floors. The ground floor offers a superb open-plan kitchen/diner and a living room with a door leading out onto the garden. The master bedroom with en-suite shower room, second bedroom and family bathroom are set on the first floor while a substantial further bedroom on the second floor features ample storage and wardrobes.

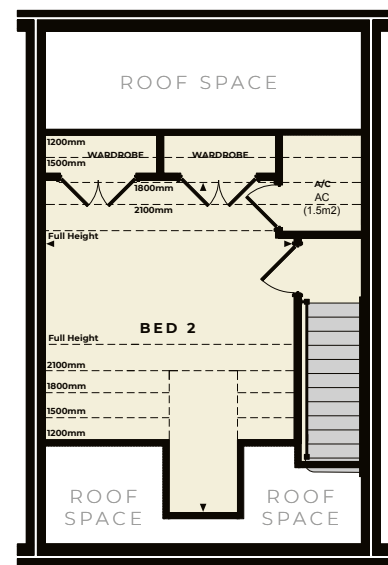
## GROUND FLOOR



## FIRST FLOOR



## SECOND FLOOR



*Holland internal room dimensions* – Total sq footage: 108sqm (1162sq’)

### GROUND FLOOR

**Living**  
5.15m x 3.24m (16’ 9” x 10’ 6”)

**Kitchen/Dining Room**  
5.50m x 2.90m (18’ 0” x 9’ 5”)

### FIRST FLOOR

**Bedroom 1**  
3.90m x 3.36m (12’ 7” x 11’ 2”)

**Bedroom 3**  
4.04m x 3.05m (13’ 23” x 10’ 0”)

### SECOND FLOOR

**Bedroom 2**  
5.40m x 4.05m (17’ 7” x 13’ 2”)

\*Featured on certain plots



**HIGHWOOD HOMES**, THE HAY BARN, UPPER ASHFIELD FARM, HOE LANE, ROMSEY, HAMPSHIRE SO51 9NJ  
TELEPHONE 023 80 011620  
EMAIL SALES@NORTHSTONEHAMPARK.CO.UK  
WEBSITE WWW.NORTHSTONEHAMPARK.CO.UK



**Disclaimer:** Floor plans and dimensions are taken from architectural drawings and are for guidance only. Dimensions stated are within a tolerance of plus or minus 50mm. Overall dimensions are usually stated and there may be projections into these. With our continual improvement policy we constantly review our designs and specifications to ensure we deliver the best product to our customers. Computer Generated Images not to scale. Finishes and materials may vary and landscaping is illustrative only. Kitchen layouts are indicative only and may change. Please speak to our Sales Advisor to confirm any specific details on our homes. March 18. Ty4/03.18