



# NORTH STONEHAM PARK



TWO BEDROOMS

## The Woburn

A charming, spacious and comfortable  
two-bedroom home

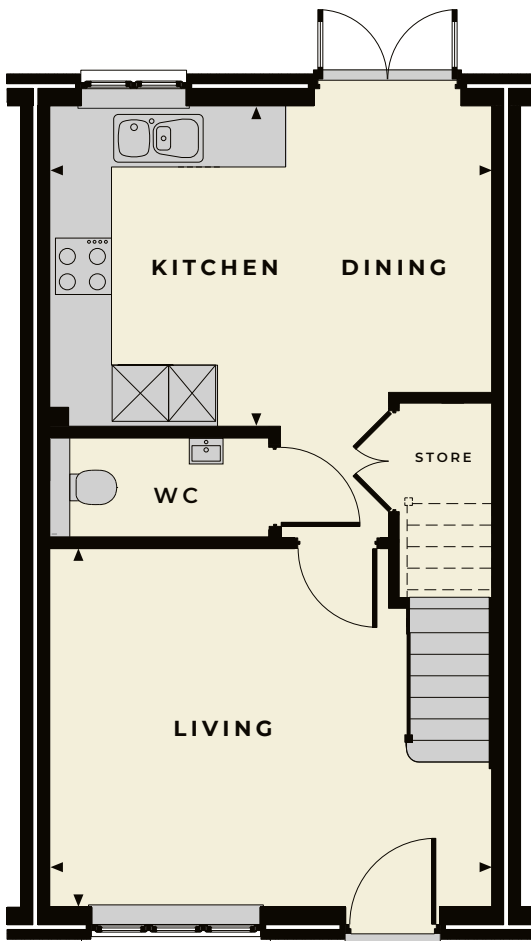
## TWO BEDROOMS

# The Woburn

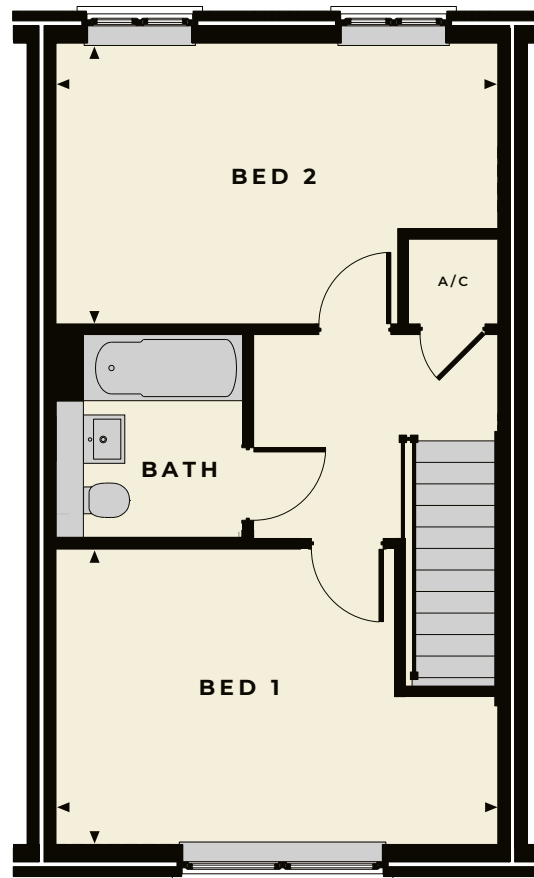


The Woburn is a spacious and comfortable two-bedroom, link home, built in a modern style and set over two floors. The ground floor offers a spacious cloakroom, a superb open-plan kitchen and dining room and a substantial living room with French doors that lead out onto the garden. The first floor has two generously proportioned bedrooms and a family bathroom.

### GROUND FLOOR



### FIRST FLOOR



*Woburn internal room dimensions* – Total sq footage: 80sqm (861sq')

#### GROUND FLOOR

##### Living

4.73m x 3.85m (15' 5" x 12' 6")

##### Kitchen/Dining Room

4.73m x 3.44m (15' 5" x 11' 3")

#### FIRST FLOOR

##### Bedroom 1

4.73m x 3.15m (15' 5" x 10' 3")

##### Bedroom 2

4.73m x 3.01m (15' 5" x 9' 9")



WORKING IN PARTNERSHIP WITH



HIGHWOOD HOMES, THE HAY BARN, UPPER ASHFIELD FARM, HOE LANE, ROMSEY, HAMPSHIRE SO51 9NJ

TELEPHONE 023 80 011620

EMAIL SALES@NORTHSTONEHAMPARK.CO.UK

WEBSITE WWW.NORTHSTONEHAMPARK.CO.UK



**Disclaimer:** Floor plans and dimensions are taken from architectural drawings and are for guidance only. Dimensions stated are within a tolerance of plus or minus 50mm. Overall dimensions are usually stated and there may be projections into these. With our continual improvement policy we constantly review our designs and specifications to ensure we deliver the best product to our customers. Computer Generated Images not to scale. Finishes and materials may vary and landscaping is illustrative only. Kitchen layouts are indicative only and may change. Please speak to our Sales Advisor to confirm any specific details on our homes. March 18. Ty8/03.18