



NORTH STONEHAM PARK



TWO BEDROOMS

The Belvoir

A stylish, spacious and comfortable two-bedroom apartment

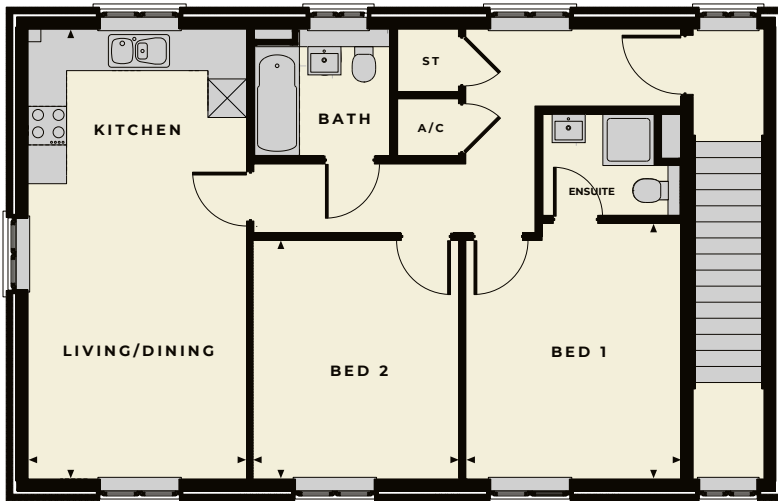
TWO BEDROOMS

The Belvoir

The Belvoir is a light, spacious and comfortable two-bedroom apartment with its own private access. This modern apartment features a generous reception space comprising an open-plan living, dining and well-equipped kitchen area. The large master bedroom features an en-suite shower room and is accessed via an entrance hall that also leads to the second bedroom, main bathroom and storage cupboards.



FIRST FLOOR



Belvoir internal room dimensions

Total sq footage: 70sqm (753sq')

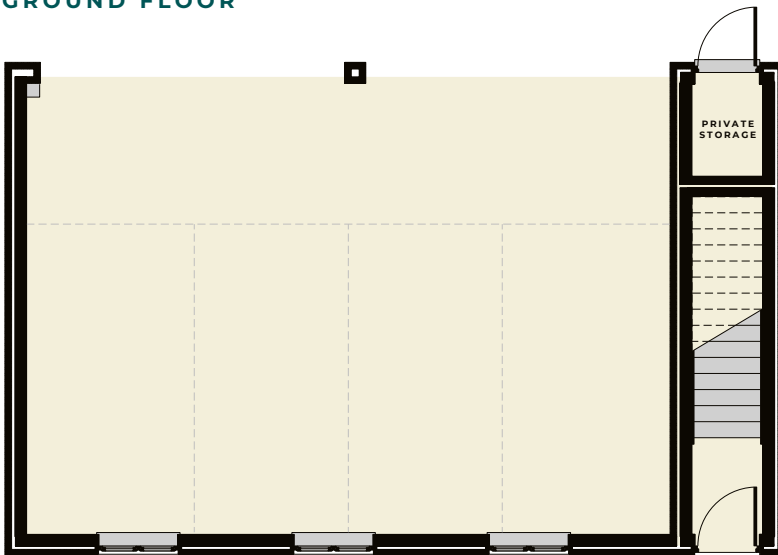
FIRST FLOOR

Bedroom 1
4.00m x 3.32m (13' 1" x 10' 9")

Bedroom 2
3.73m x 3.18m (12' 2" x 10' 4")

Kitchen/Living/Dining Room
7.02m x 3.42m (23' 0" x 11' 2")

GROUND FLOOR



WORKING IN PARTNERSHIP WITH
VIVID

HIGHWOOD HOMES, THE HAY BARN, UPPER ASHFIELD FARM,
HOE LANE, ROMSEY, HAMPSHIRE SO51 9NJ

TELEPHONE 023 80 011620

EMAIL SALES@NORTHSTONEHAMPARK.CO.UK

WEBSITE WWW.NORTHSTONEHAMPARK.CO.UK



Disclaimer: Floor plans and dimensions are taken from architectural drawings and are for guidance only. Dimensions stated are within a tolerance of plus or minus 50mm. Overall dimensions are usually stated and there may be projections into these. With our continual improvement policy we constantly review our designs and specifications to ensure we deliver the best product to our customers. Computer Generated Images not to scale. Finishes and materials may vary and landscaping is illustrative only. Kitchen layouts are indicative only and may change. Please speak to our Sales Advisor to confirm any specific details on our homes. March 18. TyFOG2/03.18