



# NORTH STONEHAM PARK

---



TWO BEDROOMS

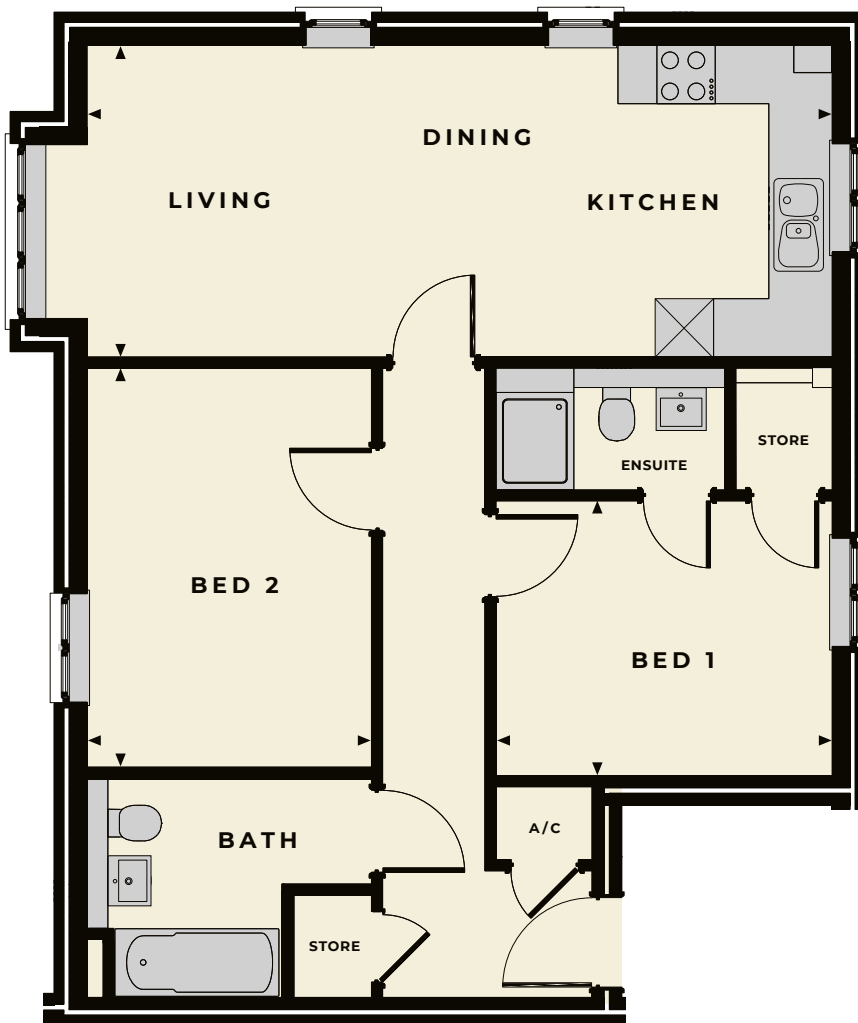
## The Brocklesbury

A stylish and spacious two-bedroom apartment

## TWO BEDROOMS

# The Brocklesbury

The Brocklesbury is a substantial two-bedroom apartment set in a three-storey, modern block of just nine homes with a superb open-plan living, dining and well-equipped kitchen area for comfortable living and entertaining. An impressive master bedroom features an en-suite shower room and wardrobe, while a second large bedroom, main bathroom and storage cupboard that also lead from the entrance hall complete the accommodation in the Brocklesbury. Second floor homes are accessed via a private entrance and stairway.



### *Brocklesbury internal room dimensions*

**Total sq footage:** 70sqm (753sq')

#### **Bedroom 1**

3.45m x 2.82m (11' 3" x 9' 3")

#### **Bedroom 2**

4.10m x 2.92m (13' 5" x 9' 6")

#### **Kitchen/Living/Dining Room**

7.66m x 3.22m (25' 1" x 10' 6")

Window to living area may vary depending on floor level



WORKING IN PARTNERSHIP WITH



**HIGHWOOD HOMES**, THE HAY BARN, UPPER ASHFIELD FARM, HOE LANE, ROMSEY, HAMPSHIRE SO51 9NJ

TELEPHONE 023 80 011620

EMAIL SALES@NORTHSTONEHAMPARK.CO.UK

WEBSITE WWW.NORTHSTONEHAMPARK.CO.UK



**Disclaimer:** Floor plans and dimensions are taken from architectural drawings and are for guidance only. Dimensions stated are within a tolerance of plus or minus 50mm. Overall dimensions are usually stated and there may be projections into these. With our continual improvement policy we constantly review our designs and specifications to ensure we deliver the best product to our customers. Computer Generated Images not to scale. Finishes and materials may vary and landscaping is illustrative only. Kitchen layouts are indicative only and may change. Please speak to our Sales Advisor to confirm any specific details on our homes. March 18. Ty2B3P/03.18