



NORTH STONEHAM PARK



FIVE BEDROOMS

The Chatsworth

A substantial, comfortable and spacious five-bedroom executive family home

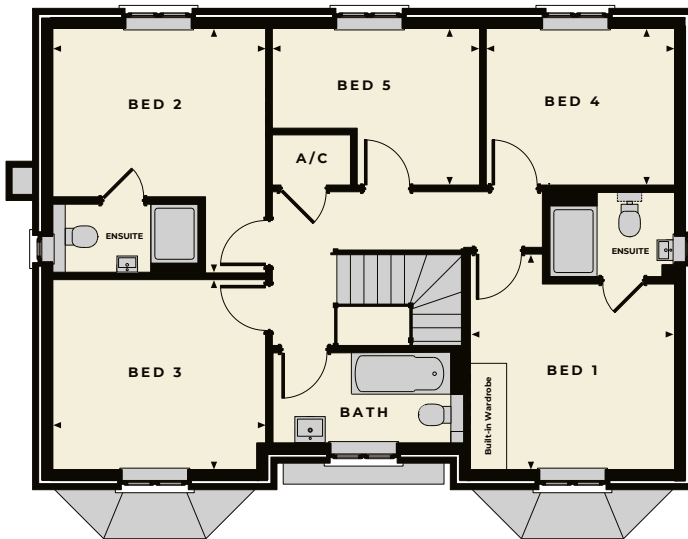
FIVE BEDROOMS

The Chatsworth

The Chatsworth is a substantial executive family home, built in a modern style and set over two floors. The ground floor features an impressive entrance hall, generously proportioned living room, study and open-plan kitchen and dining space with a well-equipped utility room. Upstairs, a spacious landing leads to a family bathroom and five large bedrooms, including a master suite and second bedroom that both feature en-suites.



FIRST FLOOR



Chatsworth internal room dimensions

Total sq footage:
156sqm (1679sq')

FIRST FLOOR

Bedroom 1
3.65m x 3.48m (12' 0" x 11' 4")

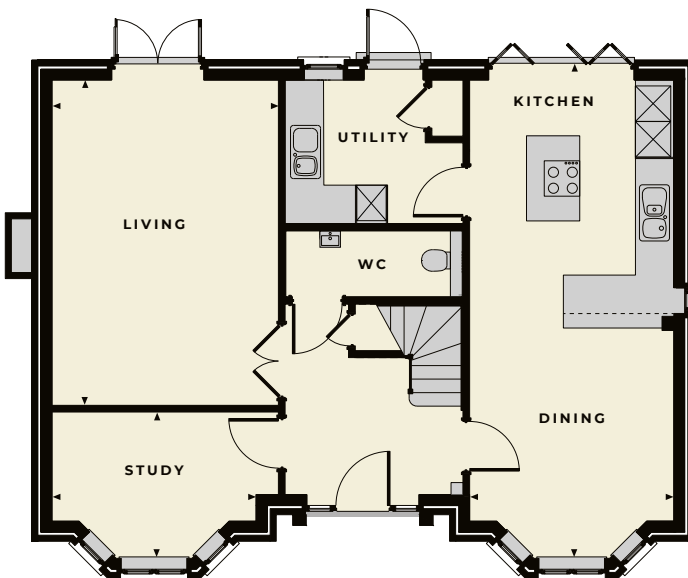
Bedroom 2
3.64m x 4.15m (11' 9" x 13' 6")

Bedroom 3
3.64m x 3.25m (11' 9" x 10' 7")

Bedroom 4
3.20m x 2.67m (10' 5" x 8' 8")

Bedroom 5
3.50m x 2.67m (11' 5" x 8' 8")

GROUND FLOOR



GROUND FLOOR

Kitchen/Dining Room
7.97m x 3.48m (26' 2" x 11' 4")

Living
5.52m x 3.86m (18' 1" x 12' 7")

Study
3.86m x 2.35m (12' 7" x 7' 7")

Utility Room
3.00m x 2.45m (9' 8" x 8')



WORKING IN PARTNERSHIP WITH



HIGHWOOD HOMES, THE HAY BARN, UPPER ASHFIELD FARM, HOE LANE, ROMSEY, HAMPSHIRE SO51 9NJ

TELEPHONE 023 80 011620

EMAIL SALES@NORTHSTONEHAMPARK.CO.UK

WEBSITE WWW.NORTHSTONEHAMPARK.CO.UK



Disclaimer: Floor plans and dimensions are taken from architectural drawings and are for guidance only. Dimensions stated are within a tolerance of plus or minus 50mm. Overall dimensions are usually stated and there may be projections into these. With our continual improvement policy we constantly review our designs and specifications to ensure we deliver the best product to our customers. Computer Generated Images not to scale. Finishes and materials may vary and landscaping is illustrative only. Kitchen layouts are indicative only and may change. Please speak to our Sales Advisor to confirm any specific details on our homes. March 18. Ty1/03.18