



NORTH STONEHAM PARK



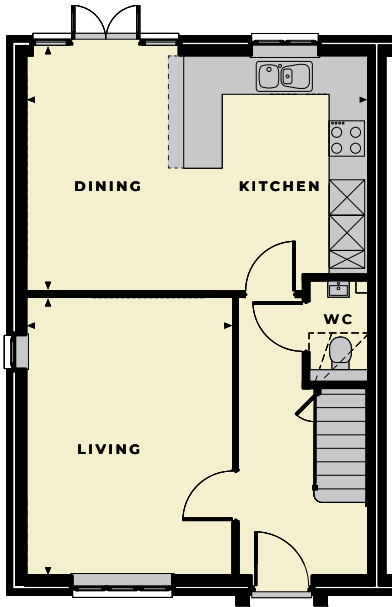
THE LANGLEY

A STYLISH, SPACIOUS AND COMFORTABLE
FOUR-BEDROOM TOWNHOUSE

FOUR BEDROOMS

THE LANGLEY

The Langley is a beautiful, four-bedroom townhouse featuring generously proportioned rooms and built in a modern style over three floors. The ground floor offers a living room and spacious open-plan kitchen and dining area with French doors that lead out onto the garden. Three bedrooms and a family bathroom are set on the first floor while a substantial master bedroom suite on the second floor features ample storage, wardrobes and shower room.

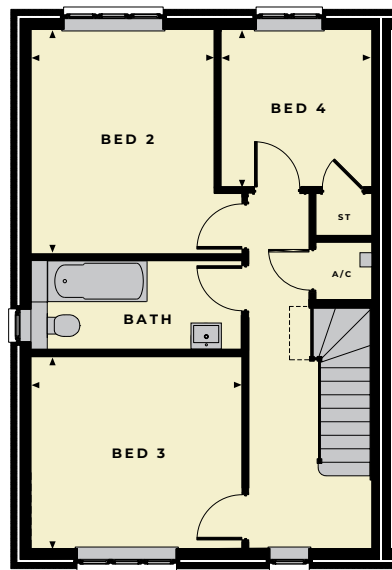


GROUND FLOOR

Living
4.70m x 3.50m (15' 4" x 11' 5")

Kitchen/Dining Room
5.80m x 4.00m (19' 0" x 13' 1")

Total sq footage 135sqm (1453sq')

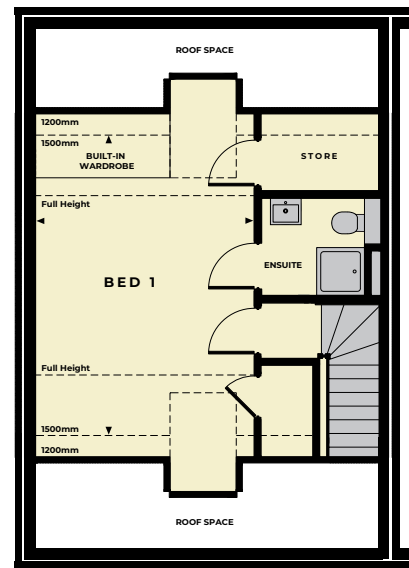


FIRST FLOOR

Bedroom 2
3.82m x 3.00m (12' 5" x 9' 8")

Bedroom 3
3.60m x 3.25m (11' 8" x 10' 7")

Bedroom 4
2.70m x 2.60m (8' 9" x 8' 5")



SECOND FLOOR

Bedroom 1
5.10m x 3.65m (16' 7" x 12' 0")

Disclaimer: Floor plans and dimensions are taken from architectural drawings and are for guidance only. Dimensions stated are within a tolerance of plus or minus 50mm. Overall dimensions are usually stated and there may be projections into these. With our continual improvement policy we constantly review our designs and specifications to ensure we deliver the best product to our customers. Computer Generated Images not to scale. Finishes and materials may vary and landscaping is illustrative only. Kitchen layouts are indicative only and may change. Please speak to our Sales Advisor to confirm any specific details on our homes. T12/02.19

NORTHSTONEHAMPARK.CO.UK

TELEPHONE 02380 011620 **EMAIL** SALES@NORTHSTONEHAMPARK.CO.UK
THE HAY BARN, UPPER ASHFIELD FARM HOE LANE, ROMSEY HAMPSHIRE SO51 9NJ

 **HIGHWOOD**

A JOINT VENTURE WITH
VIVID