



NORTH STONEHAM PARK



THREE BEDROOMS

The Audley

A stylish and spacious three-bedroom family home

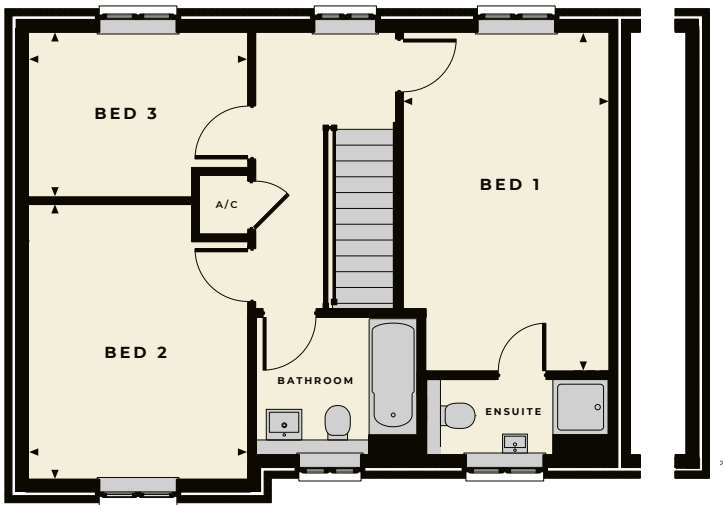
THREE BEDROOMS

The Audley



The Audley is a spacious and comfortable link or detached three-bedroom family home, built in a modern style and set over two floors. The ground floor offers a generously proportioned kitchen/diner, cloakroom, storage cupboards and a superb dual-aspect lounge with French doors that lead out onto the garden. The first floor has three bedrooms and a family bathroom, with the master bedroom featuring an en-suite shower room. A variation of the Audley also features an additional bay window.

FIRST FLOOR



Audley internal room dimensions

Total sq footage:
101sqm (1087sq')

FIRST FLOOR

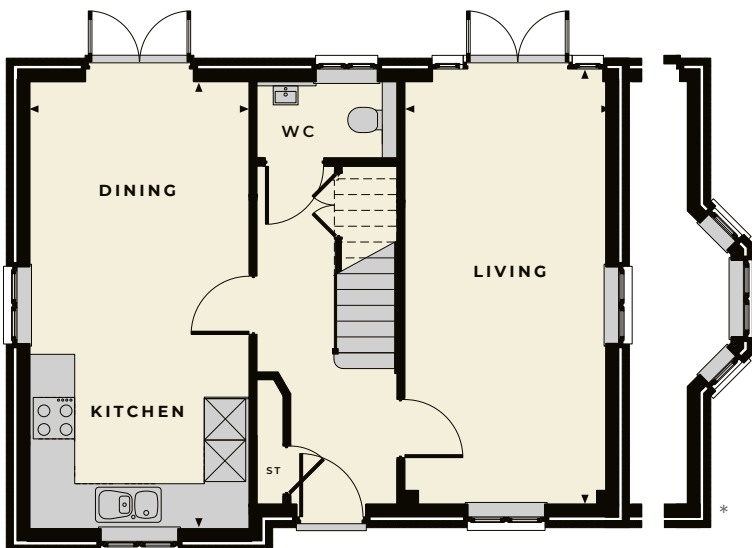
Bedroom 1
4.93m x 3.00m (16' 2" x 9' 8")

Bedroom 2
4.00m x 3.20m (13' 1" x 10' 5")

Bedroom 3
3.20m x 2.40m (10' 5" x 7' 9")

GROUND FLOOR

Plus, variation offering additional bay window



GROUND FLOOR

Living
6.15m x 3.00m (20' 2" x 9' 8")

Kitchen/Dining Room
6.52m x 3.20m (21' 4" x 10' 5")

*Featured on certain plots



WORKING IN PARTNERSHIP WITH
VIVID

HIGHWOOD HOMES, THE HAY BARN, UPPER ASHFIELD FARM,
HOE LANE, ROMSEY, HAMPSHIRE SO51 9NJ

TELEPHONE 023 80 011620

EMAIL SALES@NORTHSTONEHAMPARK.CO.UK

WEBSITE WWW.NORTHSTONEHAMPARK.CO.UK



Disclaimer: Floor plans and dimensions are taken from architectural drawings and are for guidance only. Dimensions stated are within a tolerance of plus or minus 50mm. Overall dimensions are usually stated and there may be projections into these. With our continual improvement policy we constantly review our designs and specifications to ensure we deliver the best product to our customers. Computer Generated Images not to scale. Finishes and materials may vary and landscaping is illustrative only. Kitchen layouts are indicative only and may change. Please speak to our Sales Advisor to confirm any specific details on our homes. March 18. Ty6&6.0/03,18