



# NORTH STONEHAM PARK

---



TWO BEDROOMS

## The Badminton

A light, bright and spacious two-bedroom apartment

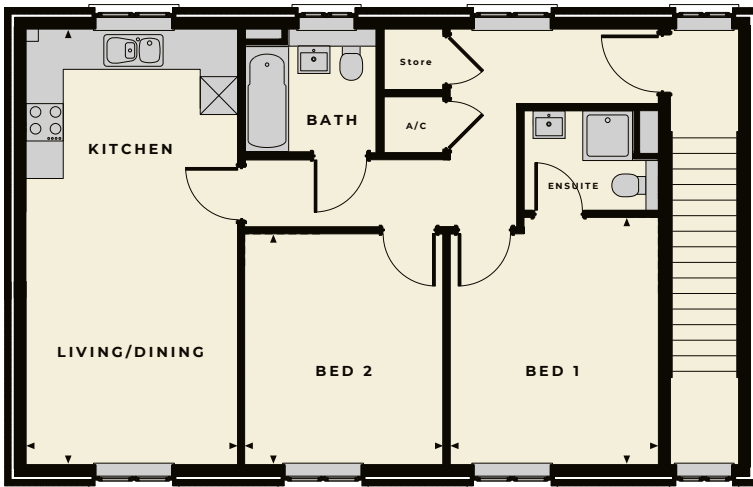
## TWO BEDROOMS

# The Badminton



The Badminton is a spacious and comfortable first floor, stand-alone, two-bedroom apartment with its own private access. This modern apartment features a generous, open-plan living, dining and well-equipped kitchen area. A superb master bedroom features an en-suite shower room and wardrobe, while a second large bedroom, main bathroom and storage cupboard that also lead from the entrance hall complete the accommodation in the Badminton. A cycle store and bin store are set on the ground floor of the building. Parking for Badminton residents is accessed via a driveway that leads under the apartment.

## FIRST FLOOR



### Badminton internal room dimensions

Total sq footage: 70sqm (753sq)

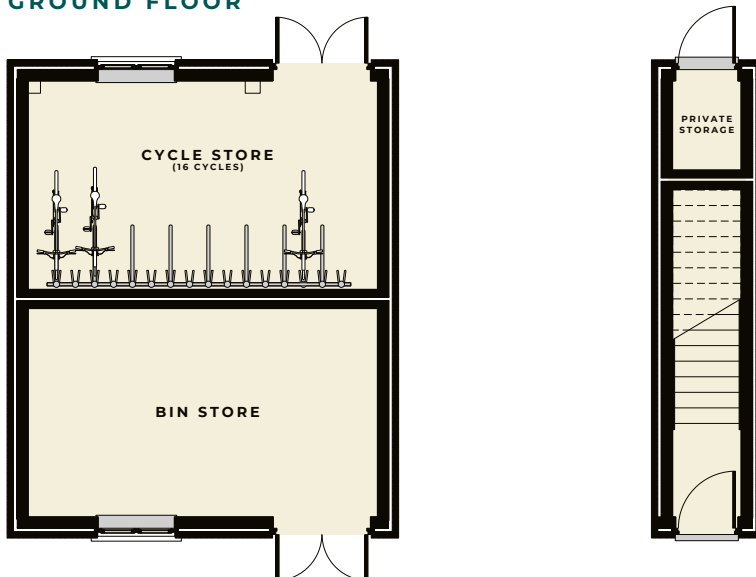
#### FIRST FLOOR

**Bedroom 1**  
4.00m x 3.32m (13' 1" x 10' 9")

**Bedroom 2**  
3.73m x 3.18m (12' 2" x 10' 4")

**Kitchen/Living/Dining Room**  
7.02m x 3.42m (23' 0" x 11' 2")

## GROUND FLOOR



WORKING IN PARTNERSHIP WITH  
**VIVID**

**HIGHWOOD HOMES**, THE HAY BARN, UPPER ASHFIELD FARM,  
HOE LANE, ROMSEY, HAMPSHIRE SO51 9NJ

TELEPHONE 023 80 011620

EMAIL SALES@NORTHSTONEHAMPARK.CO.UK

WEBSITE WWW.NORTHSTONEHAMPARK.CO.UK



**Disclaimer:** Floor plans and dimensions are taken from architectural drawings and are for guidance only. Dimensions stated are within a tolerance of plus or minus 50mm. Overall dimensions are usually stated and there may be projections into these. With our continual improvement policy we constantly review our designs and specifications to ensure we deliver the best product to our customers. Computer Generated Images not to scale. Finishes and materials may vary and landscaping is illustrative only. Kitchen layouts are indicative only and may change. Please speak to our Sales Advisor to confirm any specific details on our homes. March 18. TyFOG2/03.18