



NORTH STONEHAM PARK



TWO BEDROOMS

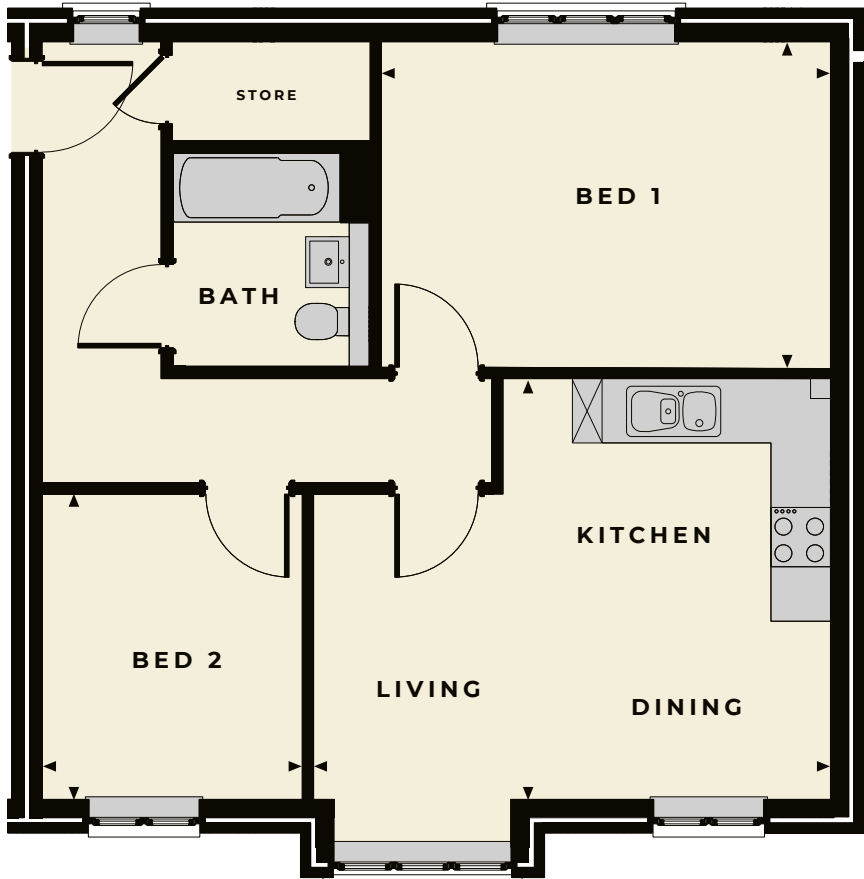
The Broadland

A bright, comfortable and spacious two-bedroom apartment

TWO BEDROOMS

The Broadland

The Broadland is a modern, spacious two-bedroom apartment set in a three-storey, modern block with superb, open-plan living, dining and well-equipped kitchen area that creates a stylish reception space. Two generously proportioned bedrooms, a bathroom and large storage cupboard lead from the entrance hall to complete the accommodation in a Broadland apartment.



Broadland internal room dimensions

Total sq footage: 61sqm (656sq)

Bedroom 1

4.54m x 3.29m (14' 9" x 10' 8")

Bedroom 2

3.09m x 2.65m (10' 1" x 8' 7")

Kitchen/Living/Dining Room

5.52m x 4.25m (18' 1" x 13' 9")

Note – the second floor

Broadland does not feature a bay window in the living area



WORKING IN PARTNERSHIP WITH



HIGHWOOD HOMES, THE HAY BARN, UPPER ASHFIELD FARM, HOE LANE, ROMSEY, HAMPSHIRE SO51 9NJ

TELEPHONE 023 80 011620

EMAIL SALES@NORTHSTONEHAMPARK.CO.UK

WEBSITE WWW.NORTHSTONEHAMPARK.CO.UK



Disclaimer: Floor plans and dimensions are taken from architectural drawings and are for guidance only. Dimensions stated are within a tolerance of plus or minus 50mm. Overall dimensions are usually stated and there may be projections into these. With our continual improvement policy we constantly review our designs and specifications to ensure we deliver the best product to our customers. Computer Generated Images not to scale. Finishes and materials may vary and landscaping is illustrative only. Kitchen layouts are indicative only and may change. Please speak to our Sales Advisor to confirm any specific details on our homes. March 18. Ty1B2P/03.18