



NORTH STONEHAM PARK



ONE BEDROOM

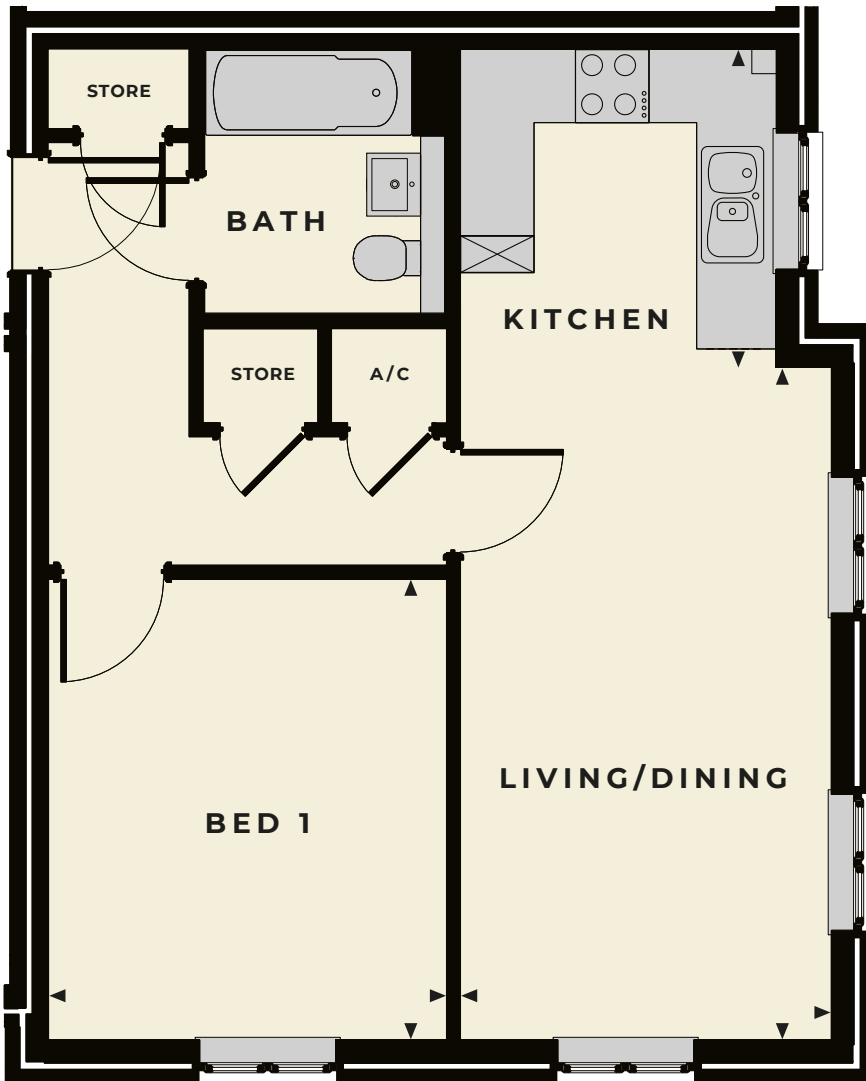
The Wallington

A light, stylish and spacious one-bedroom apartment

ONE BEDROOM

The Wallington

The Wallington is a comfortable and stylish one-bedroom apartment set in a three-storey, modern block of just nine homes. It has a generously proportioned open-plan living, dining and well-equipped kitchen space and a large master bedroom and a family bathroom plus storage cupboard. All second floor Wallington apartments feature areas of skimming ceilings – please check with your sales advisor for further information.



Wallington internal room dimensions

Total sq footage:
50sqm (538sq')

Bedroom 1
3.80m x 3.30m (12' 5" x 10' 8")

Kitchen
2.58m x 2.55m (8' 5" x 8' 4")

Living/Dining Room
5.57m x 3.08m (18' 3" x 10' 1")

Second floor will feature areas of skimming ceilings. Check with the sales advisor for further information



WORKING IN PARTNERSHIP WITH
VIVID

HIGHWOOD HOMES, THE HAY BARN, UPPER ASHFIELD FARM,
HOE LANE, ROMSEY, HAMPSHIRE SO51 9NJ

TELEPHONE 023 80 011620

EMAIL SALES@NORTHSTONEHAMPARK.CO.UK

WEBSITE WWW.NORTHSTONEHAMPARK.CO.UK



Disclaimer: Floor plans and dimensions are taken from architectural drawings and are for guidance only. Dimensions stated are within a tolerance of plus or minus 50mm. Overall dimensions are usually stated and there may be projections into these. With our continual improvement policy we constantly review our designs and specifications to ensure we deliver the best product to our customers. Computer Generated Images not to scale. Finishes and materials may vary and landscaping is illustrative only. Kitchen layouts are indicative only and may change. Please speak to our Sales Advisor to confirm any specific details on our homes. March 18. Ty1B2P/03.18